

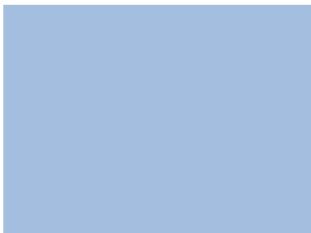


**Front Elevation A**



**Front Elevation B**

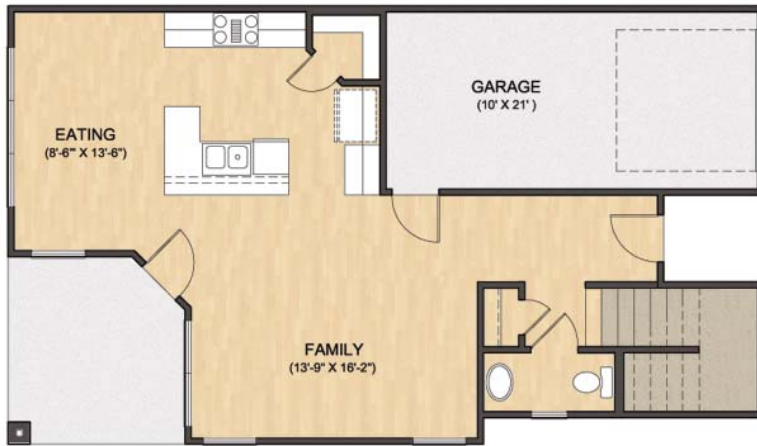
# The Hancock



*Plans and elevations are for illustrative purposes only and may contain options or detailing that are not standard. The Brohn Group, Ltd. (DBA Brohn Homes) reserves the right to make changes to these floor plans, specifications, dimensions, and elevations without prior notice. Stated dimensions and square footages are approximate and should not be used as representation of the home's precise or actual size. Copyright © 2009 The Brohn Group, Ltd. (DBA Brohn Homes)*






Second Floor



First Floor

# The Hancock

First Floor - 686 NSF  
 Second Floor - 862 NSF  
**Total Heated - 1548 NSF**

-  Carpet
-  Tile
-  Wood



Plans and elevations are for illustrative purposes only and may contain options or detailing that are not standard. The Brohn Group, Ltd. (DBA Brohn Homes) reserves the right to make changes to these floor plans, specifications, dimensions, and elevations without prior notice. Stated dimensions and square footages are approximate and should not be used as representation of the home's precise or actual size. Copyright © 2009 The Brohn Group, Ltd. (DBA Brohn Homes)